

ONLY-ONE - DEVICE TO ASSIST INSTALLATION OF LARGE FORMAT TILES/SLABS

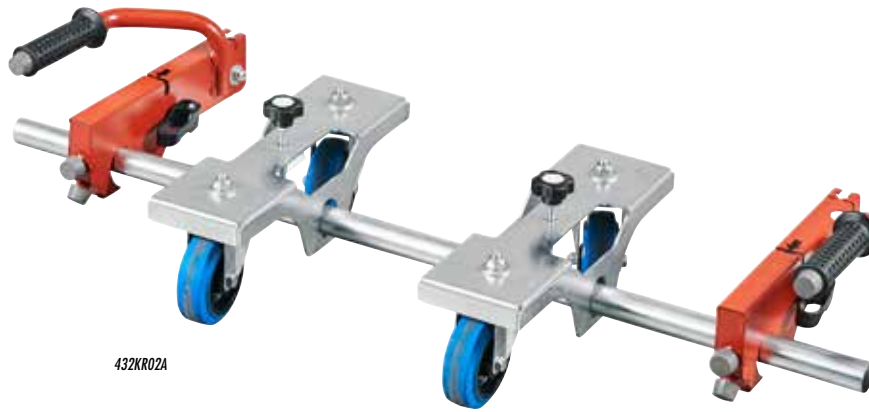
MADE IN ITALY

PATENTED

YouTube
channel
raimondispa



PACKAGE



432KR02A



ONLY-ONE mounted on EASY-MOVE^{mkiv} (Art 432KR02A + Art. 432EM04CA).

- Device to assist installation of large format tiles/slabs.
- It allows a single operator to collect a tile sized up to 150x150 cm (59"x59") from the floor and transport it to the installation area, back butter it, and lay it down next to the tile previously installed.
- On tile bigger than 150x150 cm (59"x59"), it provides excellent support for handling and installation process.
- Suitable for tile thickness from 3 mm up to 20 mm (1/8" – 3/4");

- Suitable with EASY-MOVE handling frames ^{mkiii} and ^{mkiv} versions.
- ONLY-ONE includes:
 - Cart with 4 swiveling wheels which can be repositioned according to the tile size.
 - Two ergonomic handles (to be fitted to the profiles of EASY-MOVE 150 and/or EASY-MOVE version ^{mkiv} and ^{mkiii}) equipped with a quick coupling system to the cart and anti-slip rubber pads (to safely perform back buttering).

SPECIFICATIONS AND VERSIONS

Part No.			Description	Use			
432KR02A	8050532018068	1	ONLY-ONE: device to assist installation of large format tiles/slabs	On Easy-Move ^{mkiii} and Easy-Move ^{mkiv} (X-Light, with double and vacuum suction cups, with/without crossbars)	8,9 Kg 19.6 lbs	117x20x h20 cm 46"x8"xh 8"	11,3 Kg 24.9 lbs

